

PW Series | Brushless motor

-Cordless Shut-off Impulse Tools-

Patented Unique Shut off system

Max. Torque

45 N.m



Advanced brushless motor provides longer motor life and more efficiency.

LED indicators provides process information.

Mini USB connector to read information from motor.

Press button for easy F/R operation.

Ergonomical handle design provides good balance.

Li-ion battery: Longer lifetime. No memory effect.

Advanced and stable shut-off system.

LED light for working in dark area.

1. Non-contact switch provides longer switch life.
2. Trigger switch with variable speed control.

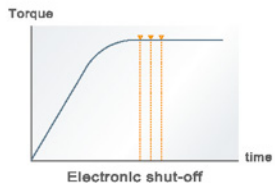
Easy attached sliding battery

SPECIFICATIONS

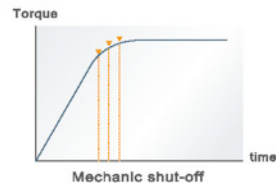
Model	Volt	Drive Size	Weight w/o Batt.	Free Speed	Torque range (N.m)		Pulse unit Type
					Hard joint	Soft joint	
PW-15	18	1/4" Hex.	1.15	4500	7-13	5-9	Shut-off
PW-15S3	18	3/8" Sq.	1.14	4500	8-15	6-10	Shut-off
PW-25	18	1/4" Hex.	1.25	4500	14-23	10-16	Shut-off
PW-25S3	18	3/8" Sq.	1.24	4500	15-25	11-17	Shut-off
PW-35	18	1/4" Hex.	1.35	3500	20-31	14-21	Shut-off
PW-35S3	18	3/8" Sq.	1.34	3500	22-35	15-24	Shut-off
PW-45S3	18	3/8" Sq.	1.41	3500	32-45	22-31	Shut-off

- This tool is suitable on hard joint(A joint) and medium soft joint(B joint), i.e. the tightening angle is less than 180 degrees.
- Set the shut-off point(1-9)as short as possible with stabilized torque on the application; 2-4 for hard joint and 3-7 for medium joint.
- The usage of a maximum of 6 bolts per minute is recommended.

-Du-Pas Superior Electronic Shut-off System-



The final torque acquired by electronic shut-off with the impulse setting function is more stable and accurate.



The final torque acquired by mechanic shut-off is easily affected by the change of oil temperature and becomes unstable and inaccurate.

FEATURES

- The Shut off Point can be adjusted according to different applications and joint types to reach the best performance and work efficiency.
- The Shut off Point setting can be locked to avoid the operators changing uncarefully.
- Reduce the influence of oil temperature inside the pulse unit to improve the torque accuracy.
- Reverse Locked mode keeps the tool always run at forward direction
- Non-contact Switch provides longer switch life.
- Advanced brushless motor provides longer motor life and better efficiency.
- Ergonomical handle design makes user feel more comfortable.



LED Indicators

Shut off Point Setting to apply various joint types.



FLASHING YELLOW + FLASHING GREEN = REVERSE OPERATION



GREEN = TIGHTENING OK



RED = TIGHTENING NG



FLASHING YELLOW = LOW BATTERY WARNING

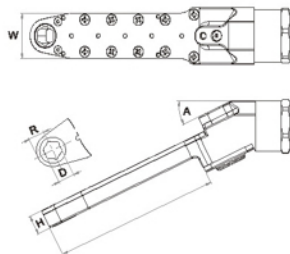


YELLOW = CHANGE BATTERY

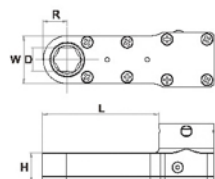
Geared Heads



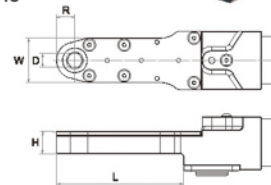
GAC



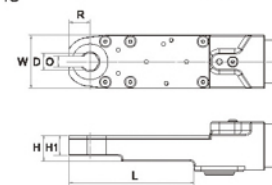
GBC



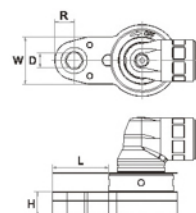
IC



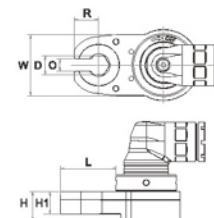
IO



BC



BO



Customization Available

- Please fill in the Request Forms for your desired geared head type.

√	Type	Torque Range (N.m)	W (mm)	OD (mm)	R (mm)	H (mm)	L (mm)	A (Angle)
	GAC							26°
	GBC							90°

Note: If to purchase gear heads only, dimension drawings of the corresponding part are required to be provided properly to Tranmax.

√	Type	Torque Range (N.m)	W (mm)	OD (mm)	O (mm)	R (mm)	L (mm)	H (mm)	H1 (mm)
	IC								
	IO								
	BC								
	BO								

Accessories

-For Du-Pas Industrial Cordless Tools-

Li-Ion Battery Packs



BB144C-340



BB180C-320



BB180C-340



BB200E-320



BB200E-340

Part No.	Description	Size (L x W x H)	Charging Time	Weight
BB144C-340	14.4V 4.0 A.h	106 x 79 x 65 mm	85 min.	0.7 kg (0.6 lb)
BB180C-320	18.0V 2.0 A.h	87 x 79 x 64 mm	45 min.	0.4 kg (0.8 lb)
BB180C-340	18.0V 4.0 A.h	106 x 79 x 78 mm	85 min.	0.6 kg (1.4 lb)
BB200E-320	20.0V 2.0 A.h	117 x 77 x 16 mm	45 min.	0.4 kg (0.9 lb)
BB200E-340	20.0V 4.0 A.h	117 x 77 x 64 mm	85 min.	0.8 kg (1.7 lb)



E86B-UL



E86B-AS



E86B-VD



E86B-UK

Power cords (for charger use)

Part No.	Description	Weight
E86B-UL	for USA region	62 g (0.13 lb)
E86B-VD	for Europe region	79 g (0.17 lb)
E86B-AS	for Australia region	105 g (0.23 lb)
E86B-UK	for England region	151 g (0.33 lb)

Chargers



B84B



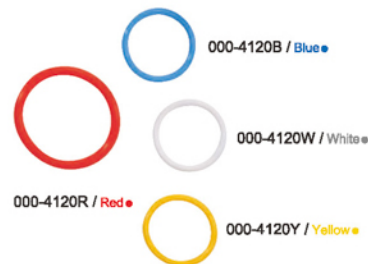
B84192B



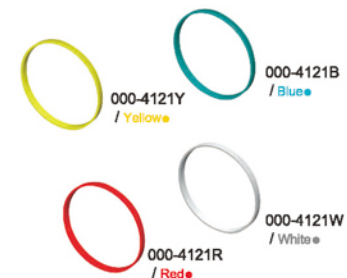
31084-200E

Part No.	Description	Weight
B84B	Input:100-240 VAC Output:10.8-14.4 V DC	0.51 kg (1.12 lb)
B84192B	Input:100-240 VAC Output:18-19.2 V DC	0.51 kg (1.12 lb)
31084-200E	Input:100-240 VAC Output:18-20 V DC	1 kg (2.2 lb)

Marking color rings (suit to WRTBA series)



Marking color rings (suit to SCB series)



Tool covers



C16SC180B
(For SCB series)



C16WRB
(For WRT(B)A series)



33116-IWCP-01
(For IWT series)



C16PW15
(For PW-15 series)



C16PW25
(For PW-25 & 35 series)



C16PW45
(For PW-45 series)

Tool covers



33116-WRCA-02
(For WRTBA-50 & 80)



33116-WRCA-03
(For WRTBA-70 & 90)



33116-WRDA-01
(For WRTCA-07 & 14)



33116-WRDA-02
(For WRTCA-30S3)

Battery pack covers



C16180C-20
(For 18V 2.0 A.h battery pack)



C16180C-40
(For 18V 4.0 A.h battery pack)



33116-B200E-01
(For 20V 2.0 A.h battery pack)



33116-B200E-02
(For 20V 4.0 A.h battery pack)



Adjustment screwdrivers

Suspension balls

(To suspend the tool on a balancer.)



➤ Part No. D39SC180B-1
(For SCB series)



➤ Part No. 33257-WRBA-01
(For WRT(B)A series)



➤ Part No. SW40-283-0102
(For PW series)



➤ Part No. D57SC108B-1
(For All series)

Spanner



➤ Part No. 33257-WRAA-01B
(For WRT(B)A & WRTCA series)

Adjustment Allen Wrenches



➤ Part No. 000-4610
(For PW series)



➤ Part No. 000-4621
(For PW-15, PW-15S3 series)

Programmer

-For Du-Pas cordless tools-

Model No. B74SC180B

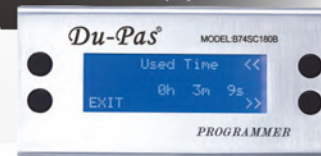
More useful functions can be referred to in the Programmer Instruction Manual.



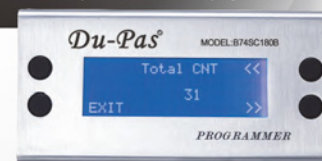
• Easy to set the tool speed.

1. High speed for metallic assemblies.
2. Medium speed for plastic assemblies.
3. Low speed for special assemblies.

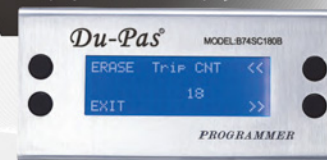
• Total used time display function.



• Total operation count display function.

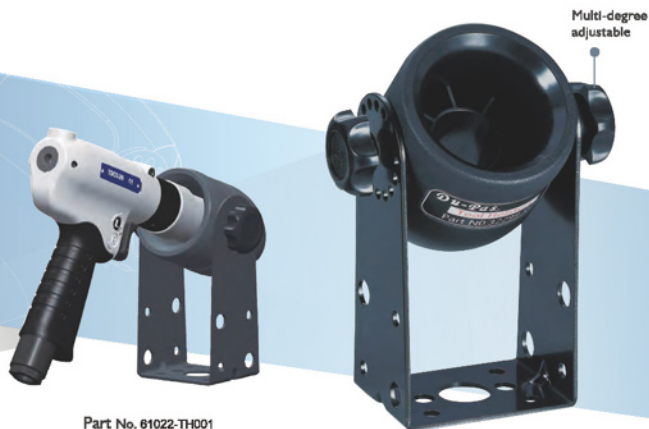


• Trip operation count display function.

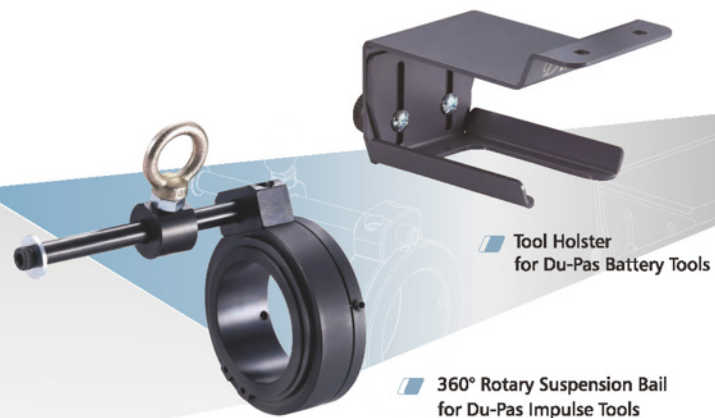


Tool Holsters

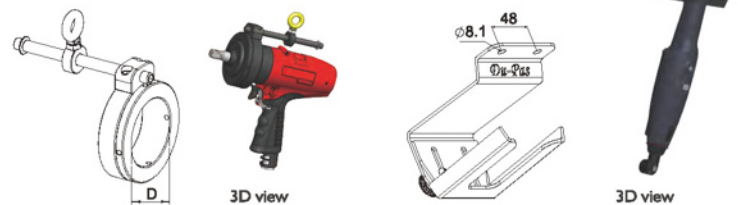
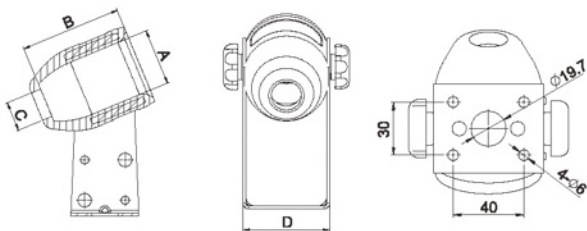
-For Du-Pas Pistol and Straight type tools-



Part No. 61022-TH001



360° Rotary Suspension Bail for Du-Pas Impulse Tools



Part No.	Dimension "A"	Dimension "B"	Dimension "C"	Dimension "D"
61022-TH001	∅42mm	75mm	∅22mm	62.3mm
61022-TH002	∅47mm	30mm	∅26mm	69.3mm
61022-TH003	∅58mm	55mm	∅33mm	80.3mm
61022-TH004	∅73mm	45mm	∅45mm	95.3mm

360° Rotary Suspension Balls for Du-Pas Impulse Tools			Tool Holder for Du-Pas Battery Tools
Part No.	D (mm)	Apply to	Part No. 61022-TH005
61022-SB001	51.3	TD(S)-90	Apply to
61022-SB002	55.3	TD(S)-100	SCT-3 · SCT-6 · SCT-9 · SCT-12 · SC180BBS3 · SC180BBS6 · SC180BBS9 · SC180BBS12 · FW-15 · FW-25 · FW-35 · PW-45 · WRTA-10 · WRTA-16 · WRTA-30 · WRTA-35 · WRTA-60 · WRTA-70 · WRTBA-10 · WRTBA-16 · WRTBA-30 · WRTBA-35 · WRTBA-50 · WRTBA-70 · RI180CBH
61022-SB003	61.3	TD(S)-130	
61022-SB004	69.3	TD(S)-150	
61022-SB005	70	TD(S)-180	